

**SBP10N2**  
**SBP12N2(I)**  
**SBP12N2(I)R**  
**SBP14N2(I)**  
**SBP14N2(I)R**  
**SBP16N2(I)**  
**SBP16N2(I)R**  
**SBP16N2S**  
**SBP16N2SR**

# AXIA ES

Pedestrian Stacker • AC Power  
**1.0 – 1.6 tonnes**

## Big performance... even in the smallest spaces

Compact, easy to use and highly versatile, AXIA ES stackers have been developed to deliver exceptional productivity in every setting.

An ergonomic tiller arm and extremely compact powerhead, coupled with a very narrow chassis and outstanding visibility, ensure excellent manoeuvrability in tight spaces, such as on board road vehicles or in block stacking.

### Frame and body

- **Sealed chassis** offers protection against dirt, dust and other particles to reduce wear.
- **Water-resistant design** diverts splashed moisture away from key electrical components, for long truck life.
- **Low centre of gravity** aids stability, for safe operation.
- **High-visibility design** maximises view of fork tips and working area.

### Mast and fork assembly

- **Robust forks** with welded construction, and rounded tips for effortless pallet entry, give extra strength and durability.
- **Straddle leg version** allows adjustment of distance between support legs to suit pallet width (SBP16N2S only).
- **Wide range of lift heights and mast types** includes triplex masts on 1.2 to 1.6 tonne models and a choice between standard or free lift masts.

### Drive

- **Powerful AC drive motor** gives excellent traction and ramp performance, as well as smooth, quiet, controlled operation, extended shift length and lower maintenance requirements.
- **Oil-filled, sealed transmission** is shock-resistant, quiet and requires little maintenance.



ready to  
**perform**  
 to your **applications**

Developed for outstanding performance and genuine value for money, the award-winning\* range of Mitsubishi forklift trucks and warehouse equipment is built to a higher specification to maximize productivity and ensure utter reliability... whatever the application.

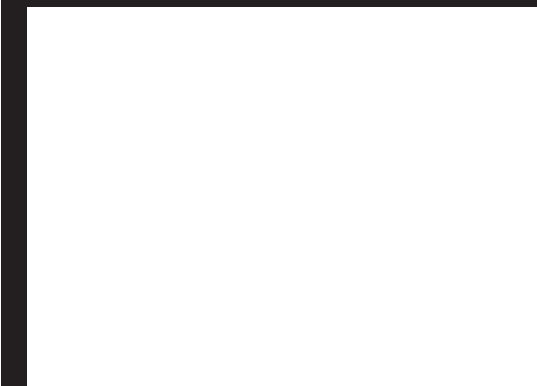
Every model in our comprehensive, award-winning range of forklift trucks and warehouse equipment is built to a high specification and is designed to keep on working for you... day after day... year after year... whatever the job... whatever the conditions.

To ensure your truck stays in constant productive action, we have a network of local dealers – hand-picked for their commitment to customer care... and backed up by the Mitsubishi Forklift Trucks organisation. No matter where you are, we have a dealer close by – ready and willing to meet your needs.

That friendly local service covers everything from identifying the perfect model and configuration for your application to providing competitive, flexible finance and maintenance packages, unbeatable warranties, long and short term hire, and highly responsive field service and repairs... as well as the industry's quickest and most reliable parts supply.

Only Mitsubishi can give you this combination of global engineering excellence and outstanding local support... only Mitsubishi offers you such a quality product at such an affordable price... and only Mitsubishi places reliability as high as you do in its priorities. Contact your local dealer now and see what Mitsubishi can do for you.

\* Mitsubishi Forklift Trucks has won four separate Fork Lift Truck Association Annual Awards for Excellence covering the areas of **Ergonomics, the Environment and Innovation.**



**MITSUBISHI FORKLIFT TRUCKS**  
[www.mitforklift.com.sg](http://www.mitforklift.com.sg)

© 2018 by MILAP. All registered trademarks are the property of their owners. Printed in Singapore.

SMIT0120-03 (03-18)

NOTE: Performance specifications may vary depending on standard manufacturing tolerances, vehicle condition, types of tyres, floor or surface conditions, applications or operating environment. Trucks may be shown with non-standard options. Specific performance requirements and locally available configurations should be discussed with your distributor of Mitsubishi forklift trucks. Mitsubishi follows a policy of continual product improvement. For this reason, some materials, options

### Steering system

- **State-of-the-art tiller arm** offers the ultimate in ergonomic design, comfort and safety.
- **Small turning circle** together with compact chassis and excellent visibility means exceptional manoeuvrability.

### Brakes

- **Regenerative braking** gives effective control, without brake wear, and extends shift life.
- **Parking brake** is automatically activated, when necessary, for extra safety on ramps.

### Electrical and control systems

- **High-efficiency electronic system** features waterproof components for maximum reliability – even in moist conditions.
- **Programmable controller** adjusts acceleration, travel speed and braking to suit the application and operator – for greater versatility.
- **On-board diagnostics** and fault memory folder speed up servicing and help prevent damage.
- **Versatile battery compartment** accommodates DIN and BS size batteries with a variety of capacities for maximum compatibility with user's equipment and needs.

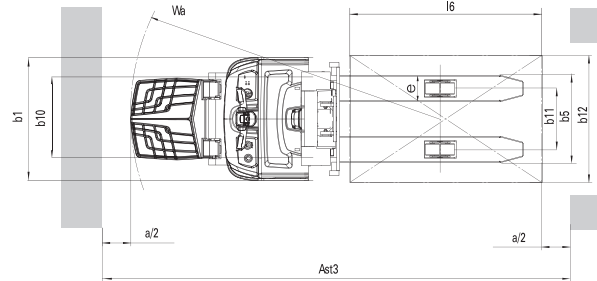
### Operator environment and controls

- **Spacious, suspended foldable platform** allows operator to ride in comfort – maximum speed 6 km/h – during occasional longer travel (R models only).
- **Choice of two performance modes** via key switch enhances safety, energy efficiency and productivity.
- **Creep speed function and tiller arm lock bypass** maximise safety and control in confined spaces.
- **Unique crossbar design** deflects obstacles away from tiller arm and operator's hand, protecting both truck and operator.
- **Easy-to-operate controls** reduce operator fatigue and minimise mistakes to enhance safety.
- **Ergonomic levers** allow operators to raise and lower loads with ease – even when wearing gloves.
- **Battery discharge indicator** is fitted as standard for battery protection and monitoring of truck use.
- **Ground clearance** is only 20 mm – which makes foot trapping very unlikely.

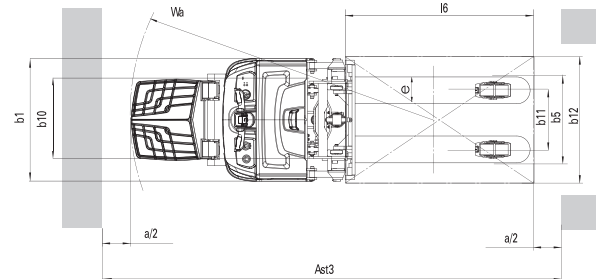
### Options include:

- **Choice of drive and load wheels for different applications**
- **Load backrest**
- **Wide variety of fork dimensions**
- **Battery changing device**
- **Sealed inbuilt charger**
- **PIN code pad**
- **Cold store modification (class III, -35°C)**
- **Multifunctional display with hour meter**
- **Equipment bar for mounting accessories (on most models)**
- **Space for 375 Ah battery**

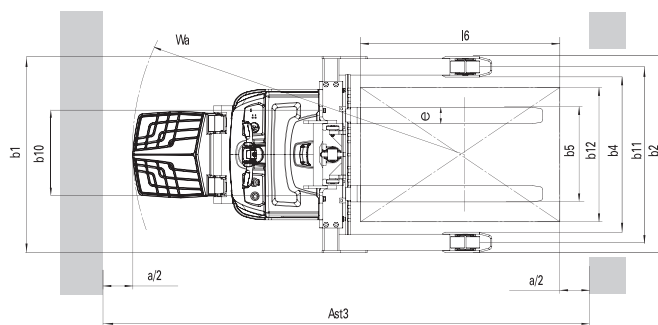
**SBP12/14/16N2R: with folding platform**



**SBP12i/14i/16iN2R: with folding platform**



**SBP16N2SR: with folding platform**



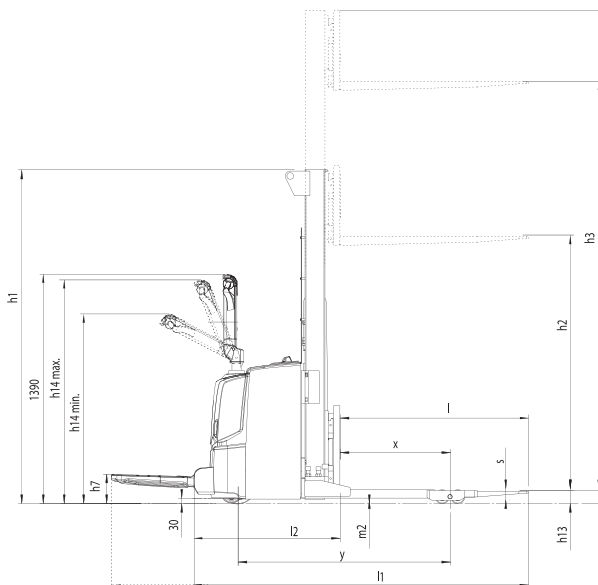
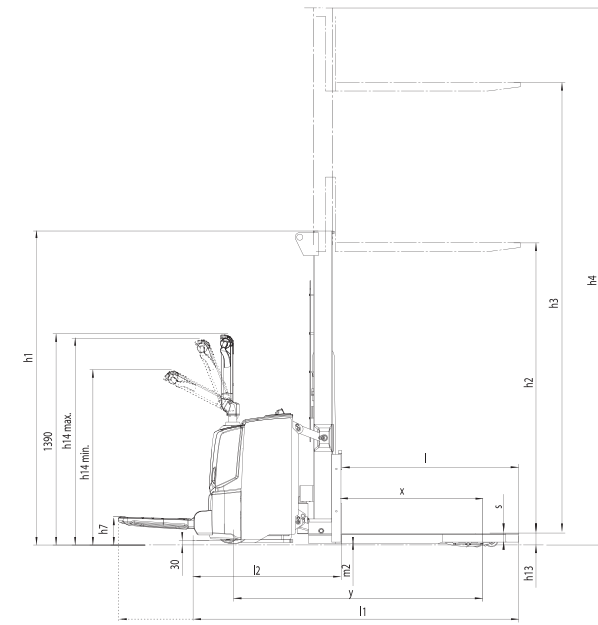
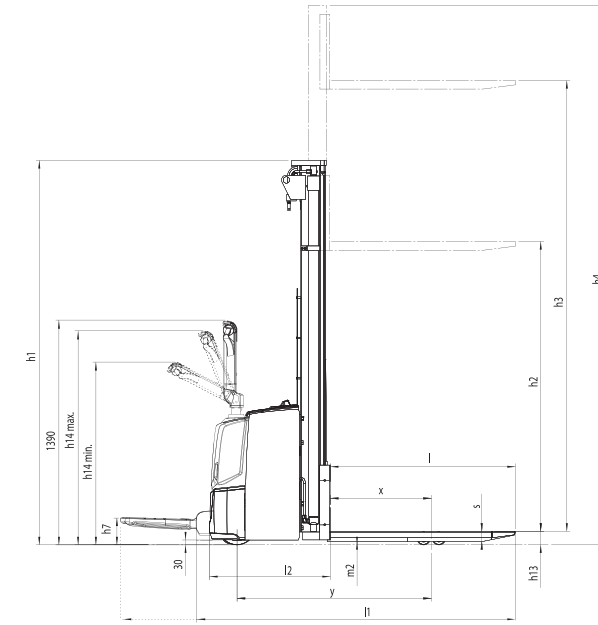
### Mast Performance and Capacity

Mast Type	SBP10N2			
	h3+h13 mm	h1 mm	h4 mm	h2+h13 mm
Simplex	1500	1980	1980	1500
	2500	1775	3000	195
Duplex	2900	1975	3400	195
	3300	2175	3800	195

Mast Type	SBP12/14/16N2 / SBP12/14/16N2R / SBP16N2S / SBP16N2SR			
	h3+h13 mm	h1 mm	h4 mm	h2+h13 mm
Simplex	1500	1950	1950	1500
	2500	1835	3000	200
Duplex	2900	2035	3400	200
	3300	2235	3800	200
	3600	2385	4100	200
	4300	2735	4800	200
	2500	1775	2940	1355
Duplex Free-lift	2900	1975	3340	1555
	3300	2235	3800	1755
	3600	2385	4100	1905
	4300	2735	4800	2255
	4100	1955	4640	
Triplex	4300	2020	4840	
	4700	2153	5240	
	5400*	2385	5940	
	4100	1955	4640	1475
Triplex Free-lift	4300	2020	4840	1540
	4700	2153	5240	1673
	5400*	2385	5940	1905

Mast Type	SBP12/14/16N2i / SBP12/14/16N2iR			
	h3+h13 mm	h1 mm	h4 mm	h2+h13 mm
Simplex	1500	2055	2055	1505
	2500	1940	3105	200
Duplex	2900	2140	3505	200
	3300	2340	3905	200
	3600	2490	4205	200
	4300	2840	4905	200
	2500	1940	3105	1360
Duplex Free-lift	2900	2140	3505	1560
	3300	2340	3905	1760
	3600	2490	4205	1910
	4300	2840	4905	2260
Triplex	4100	2060	4745	
	4300	2125	4945	
	4700	2260	5345	
	5400*	2490	6045	
Triplex Free-lift	4100	2060	4745	1480
	4300	2125	4945	1545
	4700	2260	5345	1673
	5400*	2490	6045	1910

- \* = Only SBP14N2-16N2 & SBP14N2i-16N2i
- S = Simplex
- DS = Duplex with clear-view mast
- DEV = Duplex with full free lift
- TR = Triplex with clear-view mast
- TREV = Triplex with full free lift
- h3+h13 = Lifting height
- h1 = Lowered mast height
- h4 = Raised mast height
- h2+h13 = Free lift



**MITSUBISHI FORKLIFT TRUCKS**

# AXIA ES

## Pedestrian Stacker

### AC Power • 1.6 – 2.0 tonnes

Identification											
1.01	Manufacturer (abbreviation)		Mitsubishi	Mitsubishi	Mitsubishi	Mitsubishi	Mitsubishi	Mitsubishi	Mitsubishi	Mitsubishi	Mitsubishi
1.02	Manufacturer's model designation		SBP10N2	SBP12N2(i)	SBP14N2(i)	SBP16N2(i)	SBP12N2(i)R	SBP14N2(i)R	SBP16N2(i)R	SBP16N2S	SBP16N2SR
1.03	Power source (battery, diesel, LP gas, petrol)		Battery	Battery	Battery	Battery	Battery	Battery	Battery	Battery	Battery
1.04	Operator type: pedestrian, (operator)-standing, -seated		Pedestrian	Pedestrian	Pedestrian	Pedestrian/Stand-on	Pedestrian/Stand-on	Pedestrian/Stand-on	Pedestrian/Stand-on	Pedestrian	Pedestrian/Stand-on
1.05	Load capacity	Q (kg)	1000	1200	1400	1200	1400	1600	1600	1600	1600
1.06	Load centre distance	c (mm)	600	600	600	600	600	600	600	600	600
1.08	Load wheel axle to fork face (forks lowered)	x (mm)	625	625 (925)	625 (925)	625 (925)	625 (925)	625 (925)	625 (925)	650	650
1.09	Wheelbase	y (mm)	1141	1205 (1615)	1205 (1615)	1205 (1615)	1205 (1615)	1205 (1615)	1205 (1615)	1295	1295
Weights											
2.01	Truck weight with maximum battery weight	(kg)	820	1205 (1350)		1220 (1395)	1225 (1400)	1245 (1390)	1260 (1435)	1265 (1440)	1397
2.02	Axle loadings with nominal load & maximum battery weight, drive/load side	(kg)	740 / 1080	830 (1180) / 1575 (1370)		835 (1240) / 1785 (1555)	835 (1275) / 1990 (1725)	870 (1220) / 1575 (1370)	875 (1280) / 1785 (1555)	875 (1315) / 1990 (1725)	1941 / 1056
2.03	Axle loadings without load & with maximum battery weight, drive/load side	(kg)	605 / 215	820 (955) / 385 (395)		825 (970) / 395 (425)	825 (970) / 400 (430)	860 (995) / 385 (395)	865 (1010) / 395 (425)	865 (1010) / 400 (430)	945 / 452
Wheels & tyres											
3.01	Tyres: PT=Power Thane, Vul=Vulkollan, drive/load side		Vul / Vul	Vul / Vul		Vul / Vul	Vul / Vul	Vul / Vul	Vul / Vul	Vul / Vul	Vul / Vul
3.02	Tyre dimensions, drive side	(mm)	230 x 70	230 x 70		230 x 70	230 x 70	230 x 70	230 x 70	230 x 70	230 x 70
3.03	Tyre dimensions, load side	(mm)	85 x 90	85 x 90		85 x 75	85 x 75	85 x 90	85 x 75	85 x 75	85 x 75
3.04	Castor wheel dimensions (diameter x width)	(mm)	125 x 60	125 x 60		125 x 60	125 x 60	125 x 60	125 x 60	125 x 60	125 x 60
3.05	Number of the wheels, drive/load side (x = driven)	(mm)	1 + 1x/2	1 + 1x/2		1 + 1x/4	1 + 1x/4	1 + 1x/2	1 + 1x/4	1 + 1x/4	1 + 1x/4
3.06	Track width (centre of tyres), drive side	b10 (mm)	517	517		517	517	517	517	517	517
3.07	Track width (centre of tyres), load side	b11 (mm)	385	385		385	385	385	385	385	1025-1425
Dimensions											
4.02	Height with mast lowered	h1 (mm)	see tables	see tables		see tables	see tables	see tables	see tables	see tables	see tables
4.03	Free lift	h2 (mm)	see tables	see tables		see tables	see tables	see tables	see tables	see tables	see tables
4.04	Lift height	h3+h13 (mm)	see tables	see tables		see tables	see tables	see tables	see tables	see tables	see tables
4.05	Overall height with mast raised	h4 (mm)	see tables	see tables		see tables	see tables	see tables	see tables	see tables	see tables
4.06	Initial lift	h5 (mm)	-	115		115	115	115	115	-	-
4.09	Height of tiller arm/steering console (min./max.)	h14 (mm)	1050 / 1372	1050 / 1372		1050 / 1372	1050 / 1372	1150 / 1350	1150 / 1350	1150 / 1350	1150 / 1350
4.15	Fork height, fully lowered	h13 (mm)	85	85 (90)		85 (90)	85 (90)	85 (90)	85 (90)	85 (90)	85
4.19	Overall length, platform up/down	l1 (mm)	1836	1900 (2007)		1900 (2007)	1900 (2007)	2020 (2127) / 2500 (2607)	2020 (2127) / 2500 (2607)	2020 (2127) / 2500 (2607)	1967
4.20	Length to fork face, platform up/down	l2 (mm)	686	750 (857)		750 (857)	750 (857)	870(977)/1350(1457)	870(977)/1350(1457)	870(977)/1350(1457)	817
4.21	Overall width	b1/b2 (mm)	800	800		800	800	800	800	800	800 / 1150-1550
4.22	Fork dimensions (thickness, width, length)	s/e/l (mm)	56 / 186 / 1150	56 / 186 / 1150		56 / 186 / 1150	56 / 186 / 1150	56 / 186 / 1150	56 / 186 / 1150	56 / 186 / 1150	40 / 100 / 1150
4.24	Fork carriage width	b3 (mm)	752	752		752	752	752	752	752	980
4.25	Outside width over forks	b5 (mm)	570	570		570	570	570	570	570	260-900
4.26	Innerwidth of load legs	b4 (mm)	-	-		-	-	-	-	-	600-1300
4.32	Ground clearance at center of wheelbase, (forks lowered)	m2 (mm)	20	20		20	20	20	20	20	20
4.33a	Working aisle width (Ast) with 1000 x1200 mm pallets, load crosswise, platform up/down	Ast (mm)	2291	2355 (2653)		2355 (2653)	2355 (2653)	2475 (2773) / 2955 (3253)	2475 (2773) / 2955 (3253)	2475 (2773) / 2955 (3253)	2430
4.33b	Working aisle width (Ast3) with 1000 x 1200 mm pallets, load crosswise, platform up/down	Ast3 (mm)	1958	2022 (2123)		2022 (2123)	2022 (2123)	2142 (2243) / 2622 (2723)	2142 (2243) / 2622 (2723)	2142 (2243) / 2622 (2723)	2085
4.34a	Working aisle width (Ast) with 800 x1200 mm pallets, load lengthwise, platform up/down	Ast (mm)	2283	2347 (2533)		2347 (2533)	2347 (2533)	2467 (2653) / 2947 (3133)	2467 (2653) / 2947 (3133)	2467 (2653) / 2947 (3133)	2415
4.34b	Working aisle width (Ast3) with 800 x 1200 mm pallets, load lengthwise, platform up/down	Ast3 (mm)	2158	2222 (2323)		2222 (2323)	2222 (2323)	2342 (2443) / 2822 (2923)	2342 (2443) / 2822 (2923)	2342 (2443) / 2822 (2923)	2285
4.35	Turning circle radius	Wa (mm)	1383	1447 (1848)		1447 (1848)	1447 (1848)	1567 (1968) / 2047 (2448)	1567 (1968) / 2047 (2448)	1567 (1968) / 2047 (2448)	1535
Performance											
5.01	Travel speed with/without load	(km/h)	6.0 / 6.0	6.0 / 6.0		6.0 / 6.0	6.0 / 6.0	6.0 / 6.0	6.0 / 6.0	6.0 / 6.0	6.0 / 6.0
5.02	Lifting speed with/without load	(m/s)	0.12 / 0.26	0.12 / 0.26		0.12 / 0.26	0.14 / 0.27	0.12 / 0.26	0.12 / 0.26	0.14 / 0.27	0.14 / 0.27
5.03	Lowering speed with/without load	(m/s)	0.35 / 0.40	0.35 / 0.40		0.35 / 0.40	0.35 / 0.40	0.35 / 0.40	0.35 / 0.40	0.35 / 0.40	0.35 / 0.40
5.08	Maximum gradeability, with/without load	(%)	8 / 15	8 / 15		8 / 15	8 / 15	8 / 15	8 / 15	8 / 15	8 / 15
5.10	Service brakes (mechanical/hydraulic/electric/pneumatic)	(s)	Electric	Electric		Electric	Electric	Electric	Electric	Electric	Electric
Motors											
6.01	Drive motor capacity (60 min. short duty)	(kW)	1.0	1.0		1.0	1.0	1.0	1.0	1.0	1.0
6.02	Lift motor output at 15% duty factor	(kW/%)	2.2	2.2		2.2	3.2	2.2	2.2	3.2	3.2
6.04	Battery voltage / capacity at 5-hour discharge	(V/Ah)	24 / 150	24 / 150-250		24 / 250	24 / 250-375	24 / 150-250	24 / 250	24 / 250-375	24 / 250-375
6.05	Battery weight	(kg)	151	151-212		212	212-294	151-212	212	212-294	212-294
Miscellaneous											
8.01	Type of drive control		Stepless	Stepless		Stepless	Stepless	Stepless	Stepless	Stepless	Stepless
8.04	Noise level (EN 12 053)	(dB(A))	60 / 60 / 41	60 / 60 / 41		60 / 60 / 41	70 / 72 / 41	60 / 60 / 41	60 / 60 / 41	70 / 72 / 41	70 / 72 / 41
	Body vibration (EN 13 059)	m/s <sup>2</sup>					0.8	0.8	0.8	0.8	0.8
	Hand-arm vibration (EN 13 059)	m/s <sup>2</sup>					< 2.5	< 2.5	< 2.5	< 2.5	< 2.5

Values in brackets () are for initial lift versions. All values are measured with standard configuration. Values can vary with different masts.



Outstanding visibility    Excellent manoeuvrability    Foldable platform models    Protective tiller arm design



Initial lift for ramps    Straddle leg version

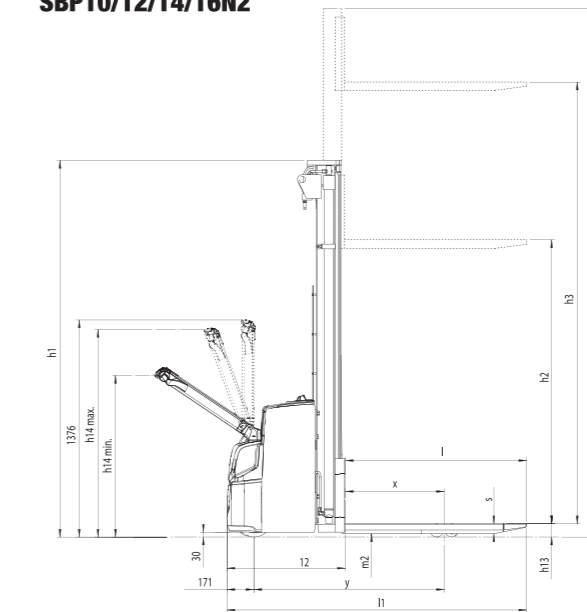
**AXIA ES**  
**THE ALL ROUNDER**

With a name that reflects its manoeuvrability, AXIA combines award-winning ergonomics with high performance and low maintenance features to deliver a complete warehouse support package.

Efficient, versatile and durable, AXIA is the perfect choice for every workplace.

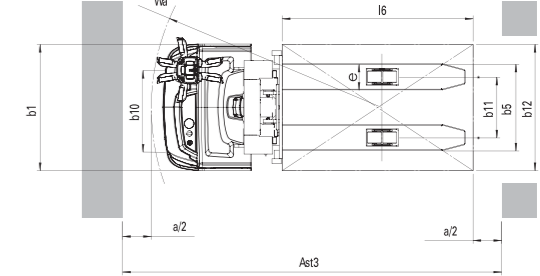
Continuing improvement may lead to changes in these specifications.

### SBP10/12/14/16N2

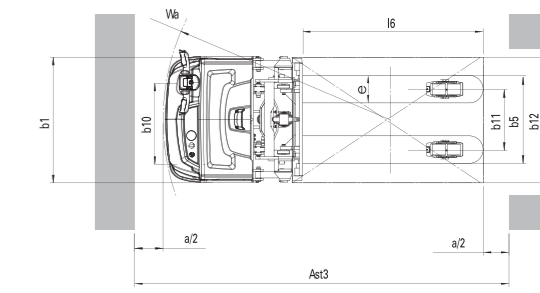
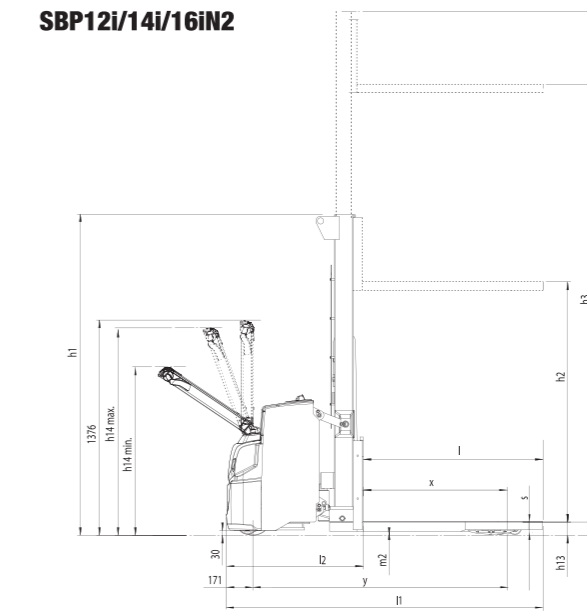


Ast = Working aisle width  
Ast3 = Working aisle width (b12 < 1000 mm)  
Ast = Wa + √(6-x)² + (b12/2)² + a  
Ast3 = Wa + 6-x+a

Wa = Turning radius  
6 = Pallet length  
x = Load wheel axle to fork face  
b12 = Pallet width  
a = Safety clearance = 2 x 100 mm



### SBP12/14/16IN2



### SBP16N2S

