



BRAZOS SERIES

Preliminary Specification Sheet

BRAZOS SERIES

CONTENTS

PBP18EA / PBP20EA / PBP25EA (AC Ped Pallet Truck)	Page 3 - 6
SBP12EAS (AC Straddle Stacker)	Page 7 - 10
SBP14EAS / SBP18EAS (AC Straddle Stacker)	Page 11 - 14
SBX12EA / SBX15EA (AC-Reach Stacker)	Page 15 - 19
TBR30EA / TBR45EA (Stand on Tow Tractor)	Page 20 - 22
TBS60EA (Sit down Tow Tractor)	Page 23 - 25





PBP18EA / PBP20EA / PBP25EA

Electric Pallet Truck 1.8 / 2.0 / 2.5t

- Long-Tiller Design Makes Operations Easier and More Convenient;
- Small Turning Radius Requirement, Excellent Performances in Curved Aisles;
- Ideal Choice for Heavy Duty but Short Distance Applications.

PBP18EA / PBP20EA / PBP25EA

Electric Pallet Truck 1.8/2.0/2.5t



Performance

- The innovative AC system offers strong power, accurate control, excellent performance.
- High strength vertical gearbox provides longer reliable uptime.
- Low-noise and durable hydraulic unit, high quality cylinder as well as hose ensure the high reliability of hydraulic system.
- AMP connector and durable electric wires greatly reduce malfunctions of components.
- One-time formed fork, box type frame and adjustable linkage extends the life of undercarriage.

Safety

- Curved design of front chassis avoids pinching point when lifting.
- Curved design of bottom frame ensures proper ground clearance and avoids hurting operator's feet.
- Emergency reverse belly button protects the operator from getting hurt.
- Emergency disconnecter will cut off power source to avoid accident when the truck goes out of control.
- Anti-rolling back brake keeps the truck from rolling down when the truck is travelling on ramp
- Load Back Rest (LBR) option avoids cargo from falling down.
- Long operation tiller withstands most impacts from crashes.

Operation

- With the new design of ergonomical tiller head, all buttons can be reached conveniently & comfortably.
- Long tiller reduces the steering force greatly.
- Adjustable forks, suitable for complicated pallets of cargos.
- Creep speed function: when tiller is in near vertical position, the driving speed will decrease automatically, allowing delicate operation in confined space. Side-open battery design for easy battery replacement and various application.

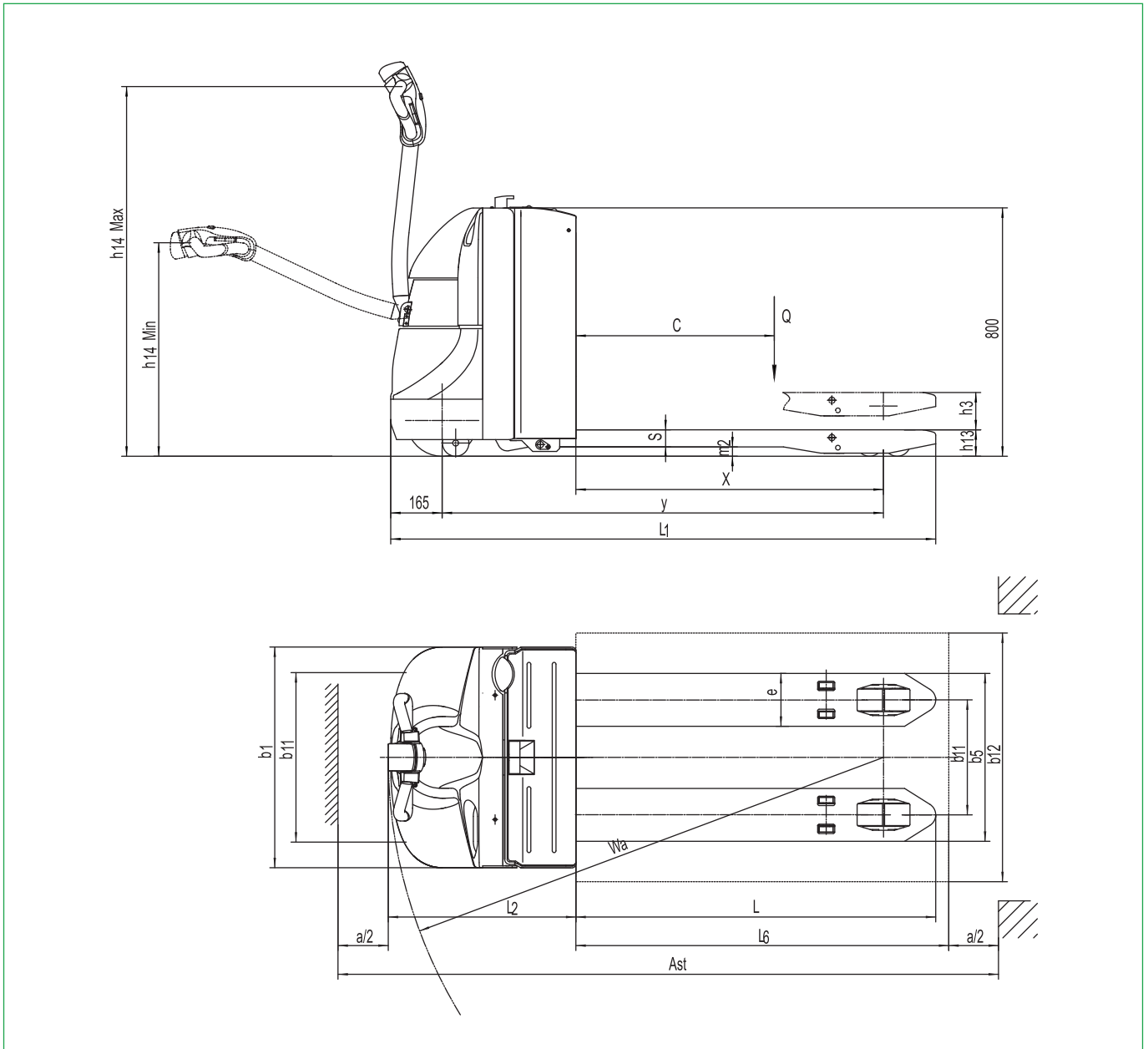
Maintenance

- AC traction motor
- Hour meter and battery indicator remind the operator of battery charging.
- Easily remove the back cover by only losing four bolts; Access to all key components for inspection, maintenance and replacement.
- Vertical motor makes the inspection & Service much more convenient.
- Control system allows easy trouble-shooting.
- Low voltage cut off setting protects batteries.

1.1	Model designation			PBP18EA	PBP20EA	PBP25EA
1.2	Drive unit			Electric	Electric	Electric
1.3	Type of operation			pedestrian	pedestrian	pedestrian
1.4	Rated capacity	Q	kg	1800	2000	2500
1.5	Load center distance	c	mm	600	600	600
1.6	Load distance	x	mm	940	916 / 982	937 / 1003
1.7	Wheelbase	y	mm	1368	1418	1488
Weight						
2.1	Service weight (include battery)		kg	445	535	565
2.2	Axle loading, laden driving side/loading side		kg	745 / 1500	955 / 1580	1070 / 1995
2.3	Axle loading, unladen driving side/loading side		kg	345 / 100	430 / 105	445 / 120
Types,Chassis						
3.1	Tyre type driving wheels/loading wheels				polyurethane/ polyurethane	
3.2	Tyre size, driving wheels (diameter×width)		mm	Φ230x75	Φ230x75	Φ230x75
3.3	Tyre size, loading wheels (diameter×width)		mm	Φ80x60	Φ85x70 / Φ83x115	Φ85x70 / Φ83x115
3.4	Tyre size, caster wheels (diameter×width)		mm	Φ85x48	Φ85x48	Φ85x48
3.5	Wheels, number driving , caster/loading (x=drive wheels)		mm	1 x + 2 / 4	1 x +2 / 4 / 1x +2 / 2	1 x +2 / 4 / 1x +2 / 2
3.6	Track width, front,driving side	b ₁₀	mm	498	498	498
3.7	Track width,rear,loading side	b ₁₁	mm	390 / 450 / 535	370 / 430 / 515	370 / 430 / 515
Dimensions						
4.4	Lift height	h ₃	mm	120	120	120
4.9	Height drawbar in driving position min./max.	h ₁₄	mm	715 / 1200	715 / 1200	715 / 1200
4.15	Lowered height	h ₁₃	mm	85	85	85
4.19	Overall length	l ₁	mm	1735	1748	1818
4.20	Length to face of forks	l ₂	mm	585	598	598
4.21	Overall width	b ₁ / b ₂	mm	710	710	710
4.22	Fork dimensions	s / e / l	mm	50 x 150 x 1150	55 x 170 x 1150	55x170x1220
4.25	Distance between fork-arms	b ₅	mm	540 / 600 / 685	540 / 600 / 685	540 / 600 / 685
4.32	Ground clearance, center of wheelbase	m ₂	mm	35	30	30
4.34.1	Aisle width for pallets 1000 × 1200 crossways	Ast	mm	1820	1815	1815
4.34.2	Aisle width for pallets 800 × 1200 lengthways	Ast	mm	2020	2015	2015
4.35	Turning radius	Wa	mm	1560	1595	1595
Performance data						
5.1	Travel speed, laden/ unladen	km/ h	km/h	5.5 / 6.0	5 / 5.5	5 / 5.5
5.2	Lifting speed, laden/ unladen		m/ s	0.051 / 0.060	0.051 / 0.060	0.051 / 0.060
5.3	Lowering speed, laden/ unladen		m/ s	0.032 / 0.039	0.032 / 0.039	0.032 / 0.039
5.8	Max. gradeability, laden/unladen			6 / 16	8 / 16	6 / 16
5.10	Service brake type			Electromagnetic	Electromagnetic	Electromagnetic
Electric-engine						
6.1	Drive motor rating S2 60 min		kW	1.1	1.1	1.1
6.2	Lift motor rating at S3 15%		kW	0.84	0.84	0.84
6.3	The maximum allowed size battery		mm	670 x 180 x 570	680 x 205 x 600	680 x 205 x 600
6.4	Battery voltage/nominal capacity K5		V/Ah	24 / 110	24 / 210	24 / 240
6.5	Battery weight		kg	120	190	220
Addition data						
8.1	Type of drive control			AC	AC	AC
10.5	Steering type			Mechanical	Mechanical	Mechanical
10.7	Sound pressure level at the driver's ear			74	74	74

1.The parameters in the table are of the standard model. For more information, please contact us.

2.The parameters are subject to change without notice.



Option

Options	PBP18EA	PBP20EA	PBP25EA
Fork length	●850/1000/1300/1450 mm	● 850/1000/1300/1450/1600/1800/2000/2400mm	● 850/1000/1300/1450/1600/1800/2000/2400mm
Fork spread	—	●460/790/840mm	●460/790/840mm
Fork lowered height	●78mm	—	—
Driving wheel	●PU	●PU	●PU
high capacity battery	●150AH	●165AH/240AH	●165AH/210AH
lateral battery change	—	●165/210AH/240AH	●165/210AH/240AH
Cold storage	●	●	●
battery indicator without hour meter	●	●	●
water auto-filling system	●	●	●
Vertical handler working	●	●	●
half speed function in turning	●	●	●
Special backrest	—	●1220mm (48in)/1520mm (60in)	●1220mm (48in)/1520mm (60in)



SBP12EAS

Electric Stacker 1.2t

- Straddle Design Improves the Stability of Stacking;
- Suitable for Handling and Stacking of Various Non-Standardized Pallets

SBP12EAS

Electric Stacker 1.2t



Performance

- The innovative AC system offers strong power, accurate control, excellent performance.
- High strength vertical gearbox, longer working life.
- Low-noise and durable hydraulic unit, good quality cylinder as well as hose ensure the high reliability of hydraulic system.
- AMP connector and durable electric wires greatly reduce malfunctions of components
- H shape channer mast improves the strength of the whole truck.
- Straddle design ensures the stability of high lifting.

Safety

- Safe hydraulic system design prevents mast from falling down abruptly when hydraulic pipeline cuts off.
- Emergency reverse belly button protects the operator from getting hurt.
- Emergency disconnecter will cut off power source to avoid accident when truck goes out of control.
- Multiple lifting limit protection ensures safety.
- Automatic switch to lower speed when the fork reaches its setting height.
- Anti-rolling back brake keeps the truck from rolling down when the truck is travelling on ramp.
- Long operational tiller ensures safety distance for operators.

Operation

- With the new design of ergonomical tiller head, all buttons can be reached conveniently & comfortably.
- Long tiller reduces the steering force greatly.
- Adjustable forks, suitable for complicated pallets of cargos.
- Creep speed function: when tiller is in near vertical position, the driving speed will decrease automatically, allowing delicate operation in confined space. Side-open battery design for easy battery replacement and various application.

Maintenance

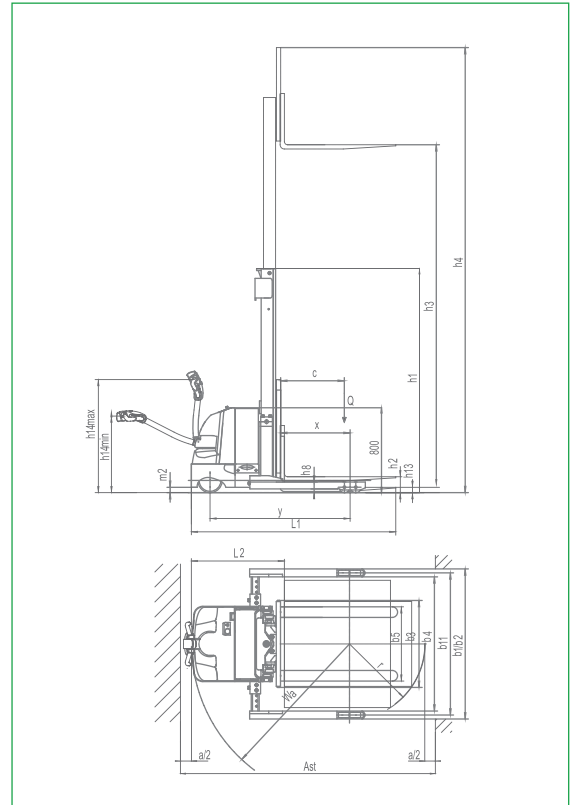
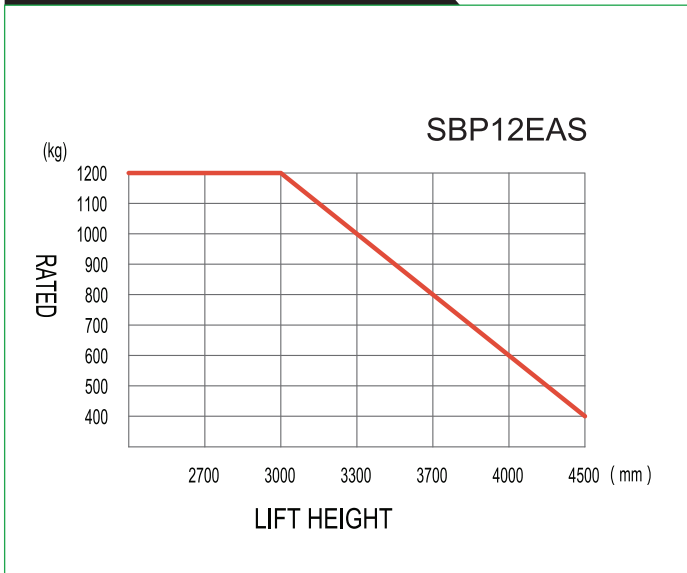
- AC traction motor.
- Hour meter and battery indicator remind the operator of battery charging.
- Easily remove the back cover by only loosening four bolts; Access to all key components for inspection, maintenance and replacement.
- Vertical motor makes the inspection & Service much more convenient.
- Control system allows easy trouble-shooting.
- Mast and chassis are assembled together, easy for maintenance.
- Low voltage cut off setting protects batteries.

Distinguishing mark				
1.1	Model designation			SBP12EAS
1.2	Drive unit			Electric
1.3	Type of operation			pedestrian
1.4	Rated capacity	Q	kg	1200
1.5	Load center distance	c	mm	600
1.7	Load distance , centre of drive axle to fork	x	mm	618
1.8	Wheelbase	y	mm	1320
Weight				
2.1	Service weight (include battery)		kg	1150
2.2	Axle loading, laden driving side/loading side		kg	685/1525
2.3	Axle loading, unladen driving side/loading side		kg	665/485
Types,Chassis				
3.1	Tyre type Driving wheels/Loading wheels			PU/PU
3.2	Tyre size, driving wheels (diameter×width)		mm	Φ230x75
3.3	Tyre size, loading wheels (diameter×width)		mm	Φ102x50
3.5	Wheels, number driving , caster/loading (x=drive wheels)		mm	1x+0/4
3.7	Track width,rear,loading side	b ₁₁	mm	1045/1145/1245/1345
Dimensions				
4.2	Height, mast lowered	h ₁	mm	2110
4.3	Free lift	h ₂	mm	150
4.4	Lift height	h ₃	mm	3270
4.5	Height, mast extended	h ₄	mm	4185
4.9	Height drawbar in driving position min./max.	h ₁₄	mm	715/1200
4.10	Height of wheel arms	h ₈	mm	100
4.15	Lowered height	h ₁₃	mm	60
4.19	Overall length	l ₁	mm	1947
4.20	Length to face of forks	l ₂	mm	877
4.21	Overall width	b ₁ / b ₂	mm	1120/1420
4.22	Fork dimensions	s/ e/ l	mm	40/100/1070
4.24	Fork carriage width	b ₃	mm	800
4.25	Distance between fork-arms	b ₅	mm	200-760
4.26	Distance between wheel arms	m ₁	mm	970-1270(adjustable)
4.32	Ground clearance, center of wheelbase	m ₂	mm	60
4.34.1	Aisle width for pallets 1000 × 1200 crossways	Ast	mm	2405
4.34.2	Aisle width for pallets 800 × 1200 lengthways	Ast	mm	2400
4.35	Turning radius	Wa	mm	1490
Performance data				
5.1	Travel speed, laden/ unladen		km/ h	5.0/5.5
5.2	Lifting speed, laden/ unladen		m/ s	0.127/ 0.23
5.3	Lowering speed, laden/ unladen		m/ s	0.26/0.20
5.8	Max. gradeability, laden/unladen		%	8/ 16
5.10	Service brake type			Electromagnetic
Electric-engine				
6.1	Drive motor rating S2 60 min		kW	1.1
6.2	Lift motor rating at S3 15%		kW	2.2
6.3	The maximum allowed size battery		mm	650/225/open
6.4	Battery voltage/nominal capacity K5		V/ Ah	24/210
6.5	Battery weight		kg	160
Addition data				
8.1	Type of drive unit			AC
10.5	Steering type			Mechanical
10.7	Sound pressure level at the driver's ear			74

1.The parameters in the table are of the standard model. For more information, please contact us.

2.The parameters are subject to change without notice.

RATED CAPACITIES GRAPH



Mast Option

mast types	Lift h3+h13 (mm)	Lowered mast height h1 (mm)	Free lift h2 (mm)	Extended mast height h4 (mm)
Duplex ZT	2470	1710	100	3385
	2670	1810	100	3585
	2970	1960	100	3885
	3270	2110	100	4185
	3570	2260	100	4485
	3870	2410	100	4785
Duplex ZZ	2660	1819	904	3585
	2960	1969	1054	3885
	3260	2119	1204	4185
Triplex DZ	4000	1822	904	4915
	4500	2022	1104	5415

Option

SBP12EAS	
Standard Fork length	● 850/1000/1300/1450
mast screen	● organic glass
Driving wheel	● Rubber wheel
High capacity battery	● 224AH maintenance free battery ; 4-6V+20A buit-in charger
lateral battery change	●
cold storage	●
battery indicator without hour meter	●
proportion lifting	●
Vertical handler working	●
side shift	●
auto-filling water system	●



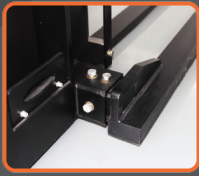
SBP14EAS / SBP18EAS

Electric Stacker 1.4 / 1.8t

- Straddle Design Improves the Stability of Stacking;
- Suitable for Handling and Stacking of Various Non-standardized Pallets.

SBP14EAS / SBP18EAS

Electric Stacker 1.4 / 1.8 t



Performance

- The innovative AC system offers strong power, accurate control, excellent performance.
- High strength vertical gearbox, longer working life.
- Low-noise and durable hydraulic unit, good quality cylinder as well as hose ensure the high reliability of hydraulic system.
- AMP connector and durable electric wires greatly reduce malfunctions of components.
- H shape channel mast improves the strength of the whole truck.
- Straddle design ensures the stability of high lifting.

Safety

- Safe hydraulic system design prevents mast from falling down abruptly when hydraulic pipeline cuts off.
- Emergency reverse belly button protects the operator from getting hurt.
- Emergency disconnecter will cut off power source to avoid accident when the truck goes out of control.
- Multiple lifting limit protection ensures safety.
- Automatic switch to lower speed when the fork reaches its selling height.
- Anti-rolling back brake keeps the truck from rolling down when the truck is travelling on ramp.
- Long operational tiller ensures safety distance for operators.

Operation

- With the new design of ergonomical tiller head, all buttons can be reached conveniently & comfortably.
- Long tiller reduces the steering force greatly.
- Adjustable forks, suitable for complicated pallets of cargos.
- Creep speed function: when tiller is in near vertical position, the driving speed will decrease automatically, allowing delicate operation in confined space. Side-open battery design for easy battery replacement and various applications.

Maintenance

- AC traction motor
- Hour meter and battery indicator remind the operator of battery charging.
- Easily remove the back cover by only losing four bolts; Access to all key components for inspection, maintenance and replacement.
- Vertical motor makes the inspection & Service much more convenient.
- Control system allows easy trouble-shooting.
- Mast and chassis are assembled together, easy for maintenance. Low voltage cut off setting protects batteries.

Distinguishing mark					
1.1	Model designation		SBP14EAS	SBP18EAS	
1.2	Drive unit		Electric	Electric	
1.3	Type of operation		pedestrian	pedestrian	
1.4	Rated capacity	Q	kg	1400	1800
1.5	Load center distance	c	mm	600	600
1.6	Load distance , centre of drive axle to fork	x	mm	610	610
1.8	Wheelbase	y	mm	1350	1455
Weight					
2.1	Service weight (include battery)		kg	1320	1520
2.2	Axle loading, laden driving side/loading side		kg	815/1905	945/2375
2.3	Axle loading, unladen driving side/loading side		kg	805/515	925/595
Types,Chassis					
3.1	Tyre type Driving wheels/Loading wheels			PU/PU	PU/PU
3.2	Tyre size, driving wheels (diameter×width)		mm	Φ230x75	Φ230x75
3.3	Tyre size, loading wheels (diameter×width)		mm	Φ102x73	Φ102x73
3.4	Tyre size, caster wheels (diameter×width)		mm	Φ85x48	Φ102x63.5
3.5	Wheels, number driving , caster/loading (x=drive wheels)		mm	1x+2/4	1x+2/4
3.6	Track width, front,driving side	b ₁₀	mm	580	580
3.7	Track width,rear,loading side	b ₁₁	mm	1170/1270/1370	1170/1270/1370
Dimensions					
4.2	Height, mast lowered	h ₁	mm	2118	2118
4.3	Free lift	h ₂	mm	150	150
4.4	Lift height	h ₃	mm	3200	3200
4.5	Height, mast extended	h ₄	mm	4115	4115
4.9	Height drawbar in driving position min./max.	h ₁₄	mm	990/1500	990/1500
4.10	Height of wheel arms	h ₈	mm	100	100
4.15	Lowered height	h ₁₃	mm	60	65
4.19	Overall length	l ₁	mm	1987	2092
4.20	Length to face of forks	l ₂	mm	917	1022
4.21	Overall width	b ₁ / b ₂	mm	850/1270/1370/1470	850/1270/1370/1470
4.22	Fork dimensions	s/ e/ l	mm	40/100/1070	45/100/1070
4.24	Fork carriage width	b ₃	mm	800	800
4.25	Distance between fork-arms	b ₅	mm	200-760	
4.26	Distance between wheel arms	m ₁	mm	1070/1170/1270	970/1070/1170
4.32	Ground clearance, center of wheelbase	m ₂	mm	50	50
4.34.1	Aisle width for pallets 1000 × 1200 crossways	Ast	mm	2460	2560
4.34.2	Aisle width for pallets 800 × 1200 lengthways	Ast	mm	2460	2560
4.35	Turning radius	Wa	mm	1545	1645
Performance data					
5.1	Travel speed, laden/ unladen		km/ h	5.0/5.5	
5.2	Lifting speed, laden/ unladen		m/ s	0.127/ 0.23	0.427/0.23
5.3	Lowering speed, laden/ unladen		m/ s	0.26/0.20	0.26/0.20
5.8	Max. gradeability, laden/unladen		%	8/10	6/10
5.10	Service brake type			Electromagnetic	Electromagnetic
Electric-engine					
6.1	Drive motor rating S2 60 min		kW	1.1	1.1
6.2	Lift motor rating at S3 15%		kW	3	3
6.3	The maximum allowed size battery		mm	800/230/open	800/330/open
6.4	Battery voltage/nominal capacity K5		V/ Ah	24/210	24/280
6.5	Battery weight		kg	190	
Addition data					
8.1	Type of drive unit			AC	AC
10.5	Steering type			Mechanical	Mechanical
10.7	Sound pressure level at the driver's ear			74	74

1.The parameters in the table are of the standard model. For more information, please contact us.
 2.The parameters are subject to change without notice.



SBX12EA / SBX15EA

Electric Stacker 1.2 / 1.5t

- Straddle Design Improves the Stability of Stacking;
- Suitable for Handling and Stacking of Various Non-standardized Pallets.

SBX12EA / SBX15EA

Electric Stacker 1.2 / 1.5t



Performance

- The innovative AC system offers strong power, accurate control, excellent performance.
- High strength vertical gearbox, longer working life.
- Low-noise and durable hydraulic unit, good quality cylinder as well as hose ensure the high reliability of hydraulic system.
- AMP connector and durable electric wires greatly reduce malfunctions of components.
- CJ shape mast channel improves the strength of the whole truck.
- Applied of with electric valve & better heat releasing systems support long time operation.

Safety

- Safe hydraulic system design prevents mast from falling down abruptly when hydraulic pipeline cuts off.
- Emergency reverse belly button protects the operator from getting hurt.
- Emergency disconnecter will cut off power source to avoid accident when the truck goes out of control.
- Multiple lifting limit protection ensures safety.
- Automatic switch to lower speed when the fork reaches its setting height.
- Anti-rolling back brake keeps the truck from rolling down when the truck is travelling on ramp.
- Electric valve will be locked up when power is cut off.
- Dual monitoring power steering.

Operation

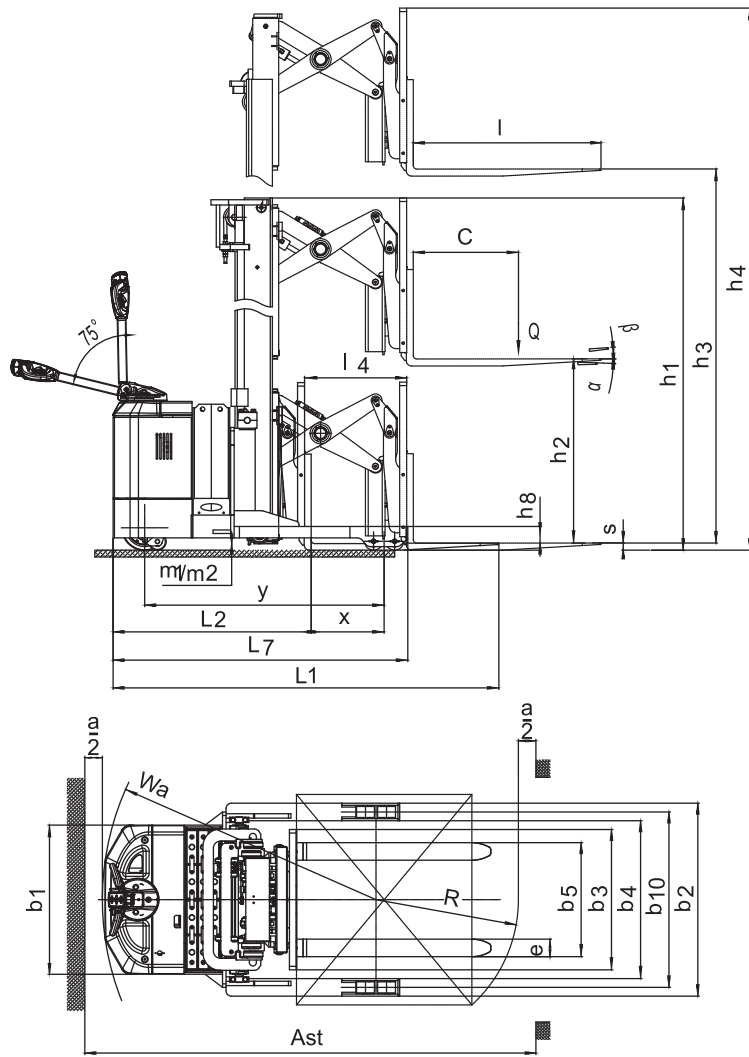
- With the new design of ergonomical tiller head, all buttons can be reached conveniently & comfortably.
- Compact design, flexible and operational.
- Side-open battery design for easy battery replacement and various applications.
- Electric proportional valve equipped as a standard feature.
- Electric power steering, smooth & comfortable (LPS).

Maintenance

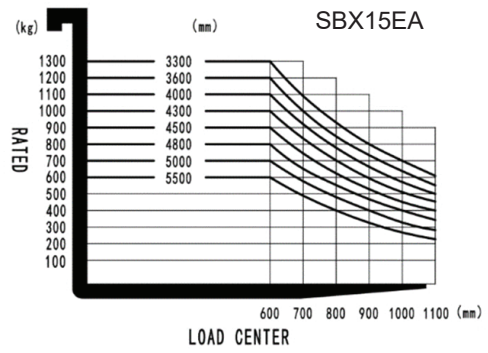
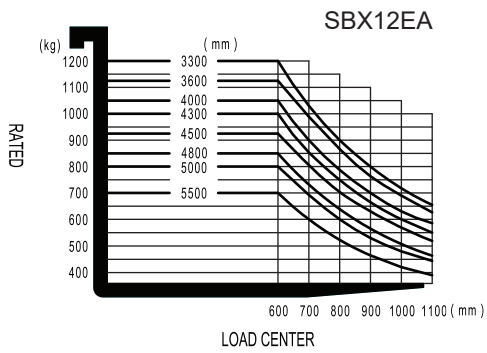
- AC traction motor.
- Hour meter and battery indicator remind the operator of battery charging.
- Easily remove the back cover by only losing four bolts; Access to all key components for inspection, maintenance and replacement.
- Vertical motor makes the inspection & Service much more convenient.
- Control system allows easy trouble-shooting.
- Mast and chassis are assembled together, easy for maintenance. Low voltage cut off setting protects batteries.

Distinguishing					
1.1	Model designation			SBX12EA	SBX15EA
1.2	Drive unit			Battery	Battery
1.3	Operator type			standing	standing
1.4	rated capacity	Q	t	1.2	1.5
1.5	Load center distance	c	mm	600	600
1.6	Wheelbase	y	mm	1365	1395
Weight					
2.1	Service weight (include battery)		kg	1835 ^①	1865 ^①
2.2	Axle loading, fork advanced, unladen driving side/loading side			1140/705	1150/715
2.3	Axle loading, fork retracted, unladen driving side/loading side			1240/605	1250/615
2.4	Axle loading, fork advanced, laden driving side/loading side		kg	285/2760	310/3055
2.5	Axle loading, fork retracted, laden driving side/loading side		kg	975/2070	1075/2290
Types,Chassis					
3.1	Tyre type driving wheels/loading wheels			polyurethane/polyurethane	polyurethane/polyurethane
3.2	Tyre size, driving wheels (diameter×width)		mm	Φ230× 75	Φ260 × 105
3.3	Tyre size, loading wheels (diameter×width)		mm	Φ102× 73	Φ102× 73
3.4	Tyre size, caster wheels (diameter×width)				Φ100× 73
3.5	Wheels, number driving, caster/loading (x=drive wheels)		mm	1×/4	1×2/4
3.6	Track width, front,driving side	b ₁₀	mm	0	0
3.7	Track width,rear,loading side	b ₁₁	mm	1000	1000
Dimensions					
4.1	Tilt of mast/fork carriage forward/backward	α/ β	°	2/4	2/4
4.2	Height, mast lowered	h ₁	mm	2090 ^②	2090 ^②
4.3	Free lift (load backrest)	h ₂	mm	0 ^②	0 ^②
4.4	Lift height	h ₃	mm	3000 ^②	3000 ^②
4.5	Height, mast extended	h ₄	mm	3960 ^②	3960 ^②
4.8	Seat height/standing height	h ₇	mm	150	150
4.10	Height of wheel arms	h ₆ (mm)	mm	135	135
4.19	Overall length (minimum)	l ₁	mm	2310 ^③	2340 ^③
4.20	Length to face of forks	l ₂	mm	1240	1270
4.21	Overall width	b ₁ / b ₂	mm	850/1100	850/1100
4.22	Fork dimensions	s/ e/ l	mm	40/100/1070	40/100/1070
4.23	Fork carriage class/type A, B		mm	A	A
4.24	Fork carriage width	b ₃	mm	800	800
4.25	Distance between fork-arms	b ₅	mm	200-780	200-780
4.26	Distance between wheel arms/loading surfaces	b ₄	mm	900	900
4.28	Reach distance	l ₄	mm	590	590
4.31	Ground clearance, laden, below mast	m ₁	mm	70	70
4.32	The minimum ground clearance of frame	m ₂	mm	70	70
4.34.1	Aisle width for pallets 1000 × 1200 crossways	Ast	mm	2665 ^③	2695 ^③
4.34.2	Aisle width for pallets 800 × 1200 lengthways	Ast	mm	2700 ^③	2730 ^③
4.35	turning radius	Wa	mm	1660	1690
4.37	Length across wheel arms (exclusive fork)	l ₇	mm	1790	1820
Performance data					
5.1	Travel speed, laden/ unladen		km/ h	5.5/6	5.5/6
5.2	Lifting speed, laden/ unladen		m/ s	0.105/ 0.135	0.11/ 0.14
5.3	Lowering speed, laden/ unladen		m/ s	0.14/ 0.14	0.24/ 0.24
5.4	Reaching speed, laden / unladen		m/ s	0.11/0.11	0.12/0.12
5.8	Max. gradeability, laden/unladen		%	6/10	6/10
5.10	Service brake type			Electromagnetic	Electromagnetic
Electric-engine					
6.1	Drive motor rating S2 60 min		kW	1.6	3.3
6.2	Lift motor rating at S3 15%		kW	3	3
6.3	The maximum allowed size battery		mm	815×208×630	815×208 ×630
6.4	Battery voltage/nominal capacity K5		V/ Ah	24/210 ^④	24/280 ^④
6.5	Battery weight		kg	190 ^④	230 ^④
Addition data					
8.1	Type of drive unit			AC	AC
10.5	Steering type			Mechanical	Electronic
10.7	Sound pressure level at the driver's ear		dB (A)	74	74

1.The parameters in the table are of the standard model. For more information, please contact us.
 2.The parameters are subject to change without notice.



RATED CAPACITIES GRAPH



SERVICE WEIGHT (Include battery)

Mast height (mm)	Service weight (kg)	
2-stage mast	SBX12EA	SBX15EA
	2700	1825
	3000	1835
	3300	1845
	3600	1855
	4000	1865
4300	1875	1905
3-stage mast	SBX12EA	SBX15EA
	4000	2065
	4500	2080
	4800	2090
	5000	2095
	5500	2110

MAST

2-stage mast		SBX12EA / SBX15EA		
Lift height	Lowered mast height	Free lift	Extended mast height	
h_3	h_1	h_2	h_4	
2700	1940	0	3660	
3000	2090	0	3960	
3300	2240	0	4260	
3600	2390	0	4560	
4000	2590	0	4960	
4300	2740	0	5260	
3-stage mast		SBX12EA / SBX15EA		
Lift height	Lowered mast height	Free lift	Extended mast height	
h_3	h_1	h_2	h_4	
4000	1960	1000	4955	
4500	2130	1170	5455	
4800	2230	1270	5760	
5000	2295	1335	5960	
5500	2460	1500	6460	

DIMENSIONS (mm)

		SBX12EA		SBX15EA	
		2-stage mast	3-stage mast	2-stage mast	3-stage mast
Overall length (minimum)	l_1	2310	2320	2340	2350
Aisle width for pallets 1000 × 1200 crossways	Ast	2665	2675	2695	2705
Aisle width for pallets 800 × 1200 lengthways	Ast	2700	2720	2730	2750
Aisle width for pallets 1000 × 1200 lengthways	Ast	2755	2765	2785	2795
Aisle width for pallets 800 × 1200 crossways	Ast	2550	2555	2580	2585

BATTERY (mm)

SBX12EA	standard	option	option	option
Capacity (Ah)	210	224 (maintenance free battery)	280	360
Battery weight (kg)	190	150	230	300
SBX15EA	standard	option	option	option
Capacity (Ah)	280	224 (maintenance free battery)	210	360
Battery weight (kg)	230	150	190	300

driving pedal	—	○	○
Electronic Power steering	—	○	○
High capacity battery	●224/280/360Ah	●224/280/360Ah	●210/224/360Ah
Cold storage (-25°C)	●	●	●
side shift	●	●	●
Water auto-filling system	●	●	●
Proportional valve	—	●	○

● option ○ standard

1. The parameters in the table are of the standard model. For more information, please contact us.
 2. The parameters are subject to change without notice.



TBR30EA / TBR45EA

Electric Tractor 3.0 / 4.5t

- Electronic Power Steering Makes Operation Easy and Fast;
- Maintenance-free AC Driving Motor Offers Stronger Power, Making it More Cost-Effective;
- Slowing-down in Curved Pathway Ensures the Smoothness and Stability.

TBR30EA / TBR45EA

Electric Tractor 3.0 / 4.5t



Performance

- The innovative AC system offers strong power, accurate control, excellent performance.
- High strength vertical gearbox, longer working life.
- AMP connector and durable electric wires greatly reduce malfunctions of components.
- Sturdy load wheel ensures stability.

Safety

- Safety foot switch avoids operators from misoperation.
- Automatic braking and reverse current braking when foot switch is off or travel switch is neutral.
- Emergency disconnecter will cut off power source to avoid accident when the truck goes out of control.
- Anti-rolling back brake keeps the truck from rolling down when the truck is travelling on ramp.
- Dual monitoring power steering.

Operation

- With the new design of ergonomical tiller head, all buttons can be reached conveniently & comfortably.
- With backrest cushion, spacious operation room and vibration absorber pedal, the operator feels more comfortable.
- Side-open battery design for easy battery replacement and various applications.
- Electric power steering, smooth & comfortable (LPS).

Maintenance

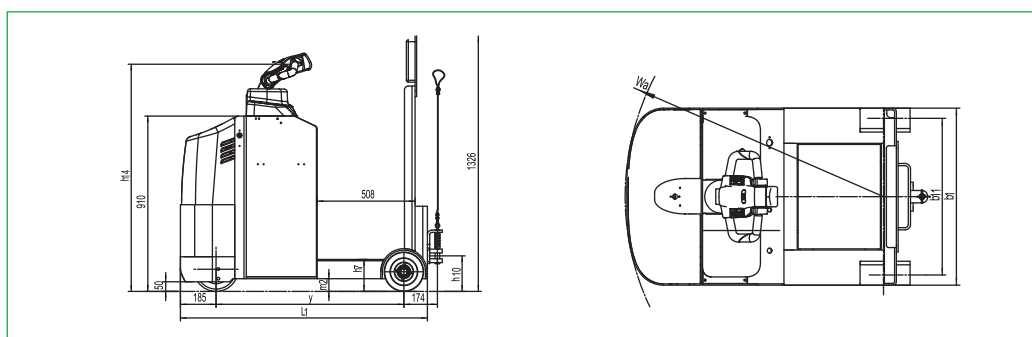
- AC traction motor, maintenance free.
- Hour meter and battery indicator remind the operator of battery charging.
- Easily remove the back cover by only losing four bolts; Access to all key components for inspection, maintenance and replacement.
- Vertical motor makes the inspection & Service much more convenient.
- Control system allows easy trouble-shooting.
- Low voltage lift cut off design protects the battery.

TBR30EA / TBR45EA

Electric Tractor 3.0 / 4.5t

Distinguishing mark					
1.1	Model designation		TBR30EA	TBR45EA	
1.2	Drive unit		Electric	Electric	
1.3	Type of operation		Standing	Standing	
1.4	Rated capacity	Q	t	3	4.5
1.5	Rated drawbar pull	F	N	600	900
1.7	Wheelbase	y (mm)	mm	975	975
Weight					
2.1	Service weight (include battery)		kg	760	850
2.2	Axle loading, laden driving side/loading side			/	/
2.3	Axle loading, unladen driving side/loading side		kg	480 / 280	530 / 320
Types,Chassis					
3.1	Tyre type driving wheels/loading wheels			PU/PU	PU/PU
3.2	Tyre size, driving wheels (diameter*width)		mm	Φ230x90	Φ230x90
3.3	Tyre size, loading wheels (diameter*width)		mm	2x Φ204x76	2x Φ204x76
3.5	Wheels, number driving/loading (x=drive wheels)		mm	1x+ 2/2	1x+ 2/2
3.6	Track width, front,driving side	b ₁₀ (mm)	mm	/	/
3.7	Track width,rear,loading side	b ₁₁ (mm)	mm	708	708
Dimensions					
4.8	standing height	h ₇ (mm)	mm	166	166
4.9	Height drawbar in driving position min./max.	h ₁₄ (mm)	mm	1220	1220
4.12	Tow coupling height scope	h ₁₀ (mm)	mm	188 / 233 / 277 / 322	188 / 233 / 277 / 322
4.19	Overall length	l ₁ (mm)	mm	1282	1282
4.21	Overall width	b ₁ / b ₂ (mm)	mm	800	800
4.32	Ground clearance, center of wheelbase	m ₂ (mm)	mm	66	66
4.35	Turning radius	Wa (mm)	mm	1168	1168
Performance data					
5.1	Travel speed, laden/ unladen		km/ h	5 / 7	4.5 / 5
5.5	Drawbar pull, laden/unladen		N	600	900
5.6	Max. drawbar pull, laden/unladen		N	2000	2600
5.7	Gradeability, laden/unladen		%	3/15	3/15
5.10	Service brake type			Electromagnetic	Electromagnetic
Electric-engine					
6.1	Drive motor rating S2 60 min		kW	2.5	2.5
6.3	The maximum allowed size battery		mm	740*350*620	740*350*620
6.4	Battery voltage/nominal capacity K5		V/Ah	24 / 210	24 / 280
6.5	Battery weight		kg	260	330
Addition data					
8.1	Type of drive unit			AC	AC
10.5	Steering type			Electronic	Electronic
10.7	Sound pressure level at the driver's ear			74	74
10.8	Towing coupling, type DIN 15170			Bolt type	Bolt type

1. The parameters in the table are of the standard model. For more information, please contact us.
 2. The parameters are subject to change without notice.



OPTION

Options	TBR30EA	TBR45EA
Driving wheel	●Rubber	●Rubber
Steering light	●	●
High capacity battery	●280Ah/360Ah/480Ah	●360Ah/480Ah



TBS60EA

Electric Tractor 6.0t

- Super Towing Capacity, Highly-efficient Performance;
- Sit-down Operation, Comfortable and Safe.

TBS60EA

Electric Tractor 6.0t



Performance

- The innovative AC system offers strong power, accurate control, excellent performance.
- AMP connector and durable electric wires greatly reduce malfunctions of components.

Safety

- Seat switch avoids wrong operation.
- Automatic braking and reverse current braking when foot switch is off or travel switch is neutral.
- Emergency disconnecter will cut off power source to avoid accident when the truck goes out of control.
- Water & dust-proof cover under traction motor can effectively extend motor life.
- Hydraulic brake, reverse current brake and mechanical brake.

Operation

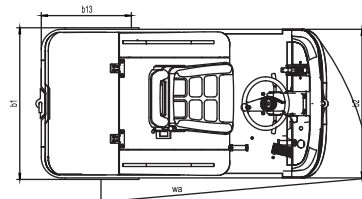
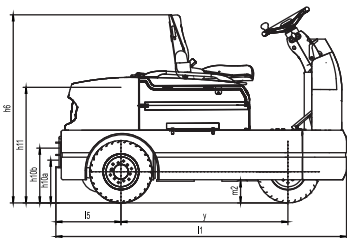
- Clear layout and spacious driving room.
- Seat with suspension, more comfortable.
- Steering wheel could be adjustable with big angles to meet operator's needs.
- Big pedal & long support arm makes it comfortable & safe.
- The layout of steering wheel, brake, foot pedal, and other instruments are the same as the electrical forklift, which makes it convenient to operate.
- Button at the rear of the tractor allows coast travel.

Maintenance

- AC traction motor.
- Hour meter and battery indicator remind the operator of battery charging.
- Easily remove the back cover by only losing four bolts; Access to all key components for inspection, maintenance and replacement.
- Control system allows easy trouble-shooting.
- Low voltage lift cut off design protects the battery.

Characteristics				
1.1	Model designation			TBS60EA
1.2	Drive unit			Electric
1.3	Type of operation			Rider seated
1.4	Load capacity	Q	kg	6000
1.5	Rated drawbar pull	F	N	1200
1.6	Wheelbase	y	mm	1110
Weights				
2.1	Service weight		kg	1150
2.2	Axle loading, unladen front/ rear		kg	500/650
Wheels, Chassis				
3.1	Tyre type			Pneumatic
3.2	Tyre size, front			4.00-8
3.3	Tyre size, rear			4.00-8
3.4	Wheels, number front/ rear (x=drive wheels)			1/2x
3.5	Tread, rear	b ₁₁	mm	869
Dimensions				
4.1	Height of overhead guard (cabin)	h ₆	mm	1320
4.2	Seat height	h ₇	mm	947
4.3	Tow coupling height	h _{10ab}	mm	318/390 (248/320,388/460)
4.4	Approach angle	α	°	
4.5	Departure angle	β	°	
4.6	Rear overhang	l ₅	mm	471
4.7	Loading platform, width	b ₉	mm	700
4.8	Overall length	l ₁	mm	1966
4.9	Overall width	b ₁ /b ₂	mm	990/1010
4.10	Ground clearance, center of wheelbase	m ₂	mm	150
4.11	Outer turning radius	Wa	mm	1800
4.12	Inner turning radius	b ₁₃	mm	677
Performance				
5.1	Travel speed, laden/ unladen		km/h	7/17
5.2	Maximum drawbar pull, laden/ unladen S ₂ 5 min.		N	4500
5.3	Gradeability, laden/unladen S ₂ 30		%	
5.4	Maximum gradeability, laden/ unladen S ₂ 5 min.		%	5/20
5.5	Service brake			Hydraulic/ Mechanical
5.6	The Mileage Covered by a Single Charging Process		km	60
Drive				
6.1	Drive motor rating S ₂ 60 min.		kW	6
6.3	Battery voltage/ rated capacity (5h)		V/Ah	48/275
6.4	Battery weight		kg	506
6.5	Battery dimensions l/ w/ h		mm	—
Others				
7.4	Sound level at operator's ear		dB(A)	70
7.5	Tow coupling			PIN

1.The parameters in the table are of the standard model. For more information, please contact us.
 2.The parameters are subject to change without notice.



OPTION

TBS60EA	
Closed cabin	•
Warning light	•
Lateral battery change	•
high capacity battery	•



Mifit

© 2017 by MNA, All right Reserved.
All trademarks are the property of their respective owners.
Printed in Singapore.
SML00002 (05/17)